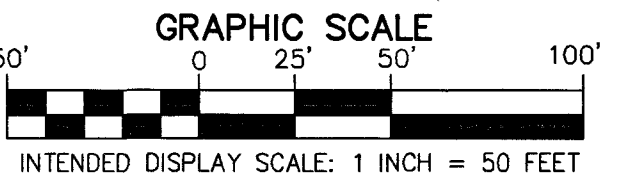
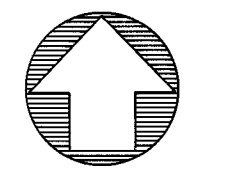


# MOUNTAIN BUSINESS CENTER MUPD

A REPLAT OF A PORTION OF TRACTS 13, 14, 15 AND 16, SECTION 19, TOWNSHIP 46 SOUTH, RANGE 42 EAST, PALM BEACH FARMS CO. PLAT NO. 1, RECORDED IN PLAT BOOK 2, PAGE 26, PUBLIC RECORDS OF PALM BEACH COUNTY, FLORIDA, LYING IN SECTION 19, TOWNSHIP 46 SOUTH, RANGE 42 EAST, PALM BEACH COUNTY, FLORIDA.

77

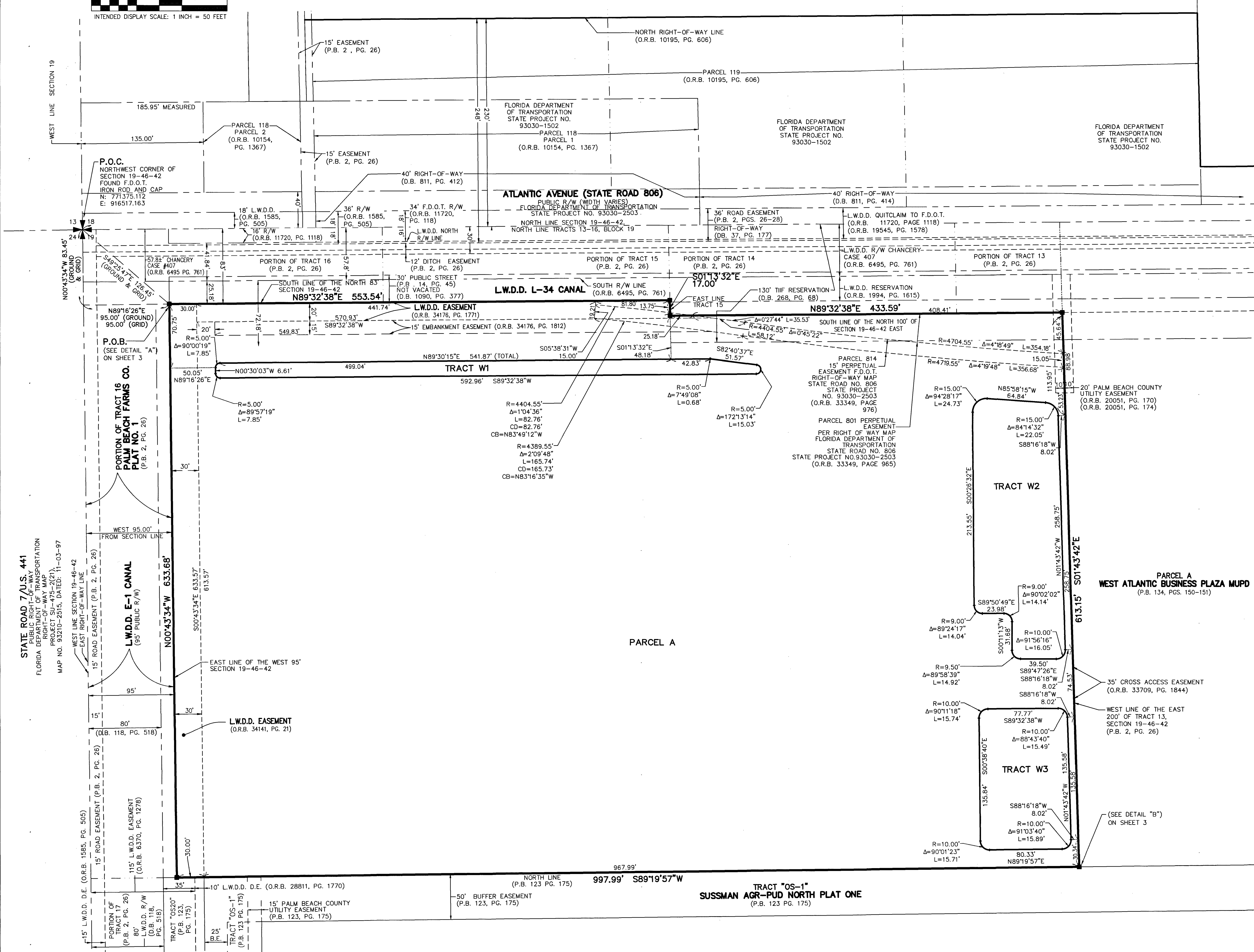


**SHEET 2 OF 3**

THIS INSTRUMENT PREPARED BY  
DAVID E. ROHAL  
OF  
**CAULFIELD & WHEELER, INC.**  
SURVEYORS - ENGINEERS - PLANNERS  
7900 GLADES ROAD, SUITE 100  
BOCA RATON, FLORIDA 33434 - (561)392-1991

**NOTES**  
**COORDINATES, BEARINGS AND DISTANCES**  
COORDINATES SHOWN ARE GRID  
DATUM = NAD 83 (90 ADJUSTMENT)  
ZONE = FLORIDA EAST  
LINEAR UNIT = US SURVEY FEET  
COORDINATE SYSTEM 1983 STATE PLANE  
TRANSVERSE MERCATOR PROJECTION  
ALL DISTANCES ARE GROUND, UNLESS NOTE OTHERWISE  
SCALE FACTOR = 1.0000205  
GROUND DISTANCE X SCALE FACTOR = GRID DISTANCE  
BEARINGS AS SHOWN HEREON ARE GRID DATUM,  
NAD 83 (90 ADJUSTMENT), FLORIDA EAST ZONE.

**LEGEND/ABBREVIATIONS:**  
CB - CHORD BEARING  
CD - CHORD DISTANCE  
D.B. - DEED BOOK  
Δ - DELTA (CENTRAL ANGLE)  
R - RADIUS  
L - ARC LENGTH  
N - NORTHING (WHEN USED WITH COORDINATES)  
E - EASTING (WHEN USED WITH COORDINATES)  
O.R.B. - OFFICIAL RECORDS BOOK  
P.B. - PLAT BOOK  
PG.(S) - PAGE(S)  
B.E. - BUFFER EASEMENT  
PBCU - PALM BEACH COUNTY WATER UTILITIES DEPARTMENT EASEMENT  
F.D.O.T. - FLORIDA DEPARTMENT OF TRANSPORTATION  
LB - LICENSED BUSINESS  
L.W.D.D. - LAKE WORTH DRAINAGE DISTRICT  
MUPD - MULTI USE PLANNED DEVELOPMENT  
R/W - RIGHT-OF-WAY  
■ PRM - DENOTES PERMANENT REFERENCE MONUMENT SET 4" x 4" x 24" CONCRETE MONUMENT WITH ALUMINUM DISK STAMPED "C&W PRM LB35591" UNLESS OTHERWISE NOTED  
△ - DENOTES HORIZONTAL CONTROL POINT  
✱ - INDICATES SECTION CORNER  
✱ - INDICATES 1/4 SECTION CORNER



STATE ROAD 7 (U.S. 441)  
PUBLIC RIGHT-OF-WAY  
FLORIDA DEPARTMENT OF TRANSPORTATION  
RIGHT-OF-WAY MAP  
PROJECT SU-475-2(21)  
MAP NO. 93210-2515, DATED: 11-03-97

WEST 95.00'  
FROM SECTION LINE

15' L.W.D.D. E. (O.R.B. 1585, PG. 505)  
15' ROAD EASEMENT (P.B. 2, PG. 26)  
115' L.W.D.D. EASEMENT (O.R.B. 6370, PG. 1278)  
80' L.W.D.D. R/W (O.R.B. 118, PG. 518)

15' L.W.D.D. E. (O.R.B. 1585, PG. 505)  
15' ROAD EASEMENT (P.B. 2, PG. 26)  
115' L.W.D.D. EASEMENT (O.R.B. 6370, PG. 1278)  
80' L.W.D.D. R/W (O.R.B. 118, PG. 518)

15' L.W.D.D. E. (O.R.B. 1585, PG. 505)  
15' ROAD EASEMENT (P.B. 2, PG. 26)  
115' L.W.D.D. EASEMENT (O.R.B. 6370, PG. 1278)  
80' L.W.D.D. R/W (O.R.B. 118, PG. 518)

15' L.W.D.D. E. (O.R.B. 1585, PG. 505)  
15' ROAD EASEMENT (P.B. 2, PG. 26)  
115' L.W.D.D. EASEMENT (O.R.B. 6370, PG. 1278)  
80' L.W.D.D. R/W (O.R.B. 118, PG. 518)

15' L.W.D.D. E. (O.R.B. 1585, PG. 505)  
15' ROAD EASEMENT (P.B. 2, PG. 26)  
115' L.W.D.D. EASEMENT (O.R.B. 6370, PG. 1278)  
80' L.W.D.D. R/W (O.R.B. 118, PG. 518)

15' L.W.D.D. E. (O.R.B. 1585, PG. 505)  
15' ROAD EASEMENT (P.B. 2, PG. 26)  
115' L.W.D.D. EASEMENT (O.R.B. 6370, PG. 1278)  
80' L.W.D.D. R/W (O.R.B. 118, PG. 518)

15' L.W.D.D. E. (O.R.B. 1585, PG. 505)  
15' ROAD EASEMENT (P.B. 2, PG. 26)  
115' L.W.D.D. EASEMENT (O.R.B. 6370, PG. 1278)  
80' L.W.D.D. R/W (O.R.B. 118, PG. 518)

15' L.W.D.D. E. (O.R.B. 1585, PG. 505)  
15' ROAD EASEMENT (P.B. 2, PG. 26)  
115' L.W.D.D. EASEMENT (O.R.B. 6370, PG. 1278)  
80' L.W.D.D. R/W (O.R.B. 118, PG. 518)

15' L.W.D.D. E. (O.R.B. 1585, PG. 505)  
15' ROAD EASEMENT (P.B. 2, PG. 26)  
115' L.W.D.D. EASEMENT (O.R.B. 6370, PG. 1278)  
80' L.W.D.D. R/W (O.R.B. 118, PG. 518)

15' L.W.D.D. E. (O.R.B. 1585, PG. 505)  
15' ROAD EASEMENT (P.B. 2, PG. 26)  
115' L.W.D.D. EASEMENT (O.R.B. 6370, PG. 1278)  
80' L.W.D.D. R/W (O.R.B. 118, PG. 518)

15' L.W.D.D. E. (O.R.B. 1585, PG. 505)  
15' ROAD EASEMENT (P.B. 2, PG. 26)  
115' L.W.D.D. EASEMENT (O.R.B. 6370, PG. 1278)  
80' L.W.D.D. R/W (O.R.B. 118, PG. 518)

15' L.W.D.D. E. (O.R.B. 1585, PG. 505)  
15' ROAD EASEMENT (P.B. 2, PG. 26)  
115' L.W.D.D. EASEMENT (O.R.B. 6370, PG. 1278)  
80' L.W.D.D. R/W (O.R.B. 118, PG. 518)

15' L.W.D.D. E. (O.R.B. 1585, PG. 505)  
15' ROAD EASEMENT (P.B. 2, PG. 26)  
115' L.W.D.D. EASEMENT (O.R.B. 6370, PG. 1278)  
80' L.W.D.D. R/W (O.R.B. 118, PG. 518)

15' L.W.D.D. E. (O.R.B. 1585, PG. 505)  
15' ROAD EASEMENT (P.B. 2, PG. 26)  
115' L.W.D.D. EASEMENT (O.R.B. 6370, PG. 1278)  
80' L.W.D.D. R/W (O.R.B. 118, PG. 518)

15' L.W.D.D. E. (O.R.B. 1585, PG. 505)  
15' ROAD EASEMENT (P.B. 2, PG. 26)  
115' L.W.D.D. EASEMENT (O.R.B. 6370, PG. 1278)  
80' L.W.D.D. R/W (O.R.B. 118, PG. 518)

15' L.W.D.D. E. (O.R.B. 1585, PG. 505)  
15' ROAD EASEMENT (P.B. 2, PG. 26)  
115' L.W.D.D. EASEMENT (O.R.B. 6370, PG. 1278)  
80' L.W.D.D. R/W (O.R.B. 118, PG. 518)

15' L.W.D.D. E. (O.R.B. 1585, PG. 505)  
15' ROAD EASEMENT (P.B. 2, PG. 26)  
115' L.W.D.D. EASEMENT (O.R.B. 6370, PG. 1278)  
80' L.W.D.D. R/W (O.R.B. 118, PG. 518)